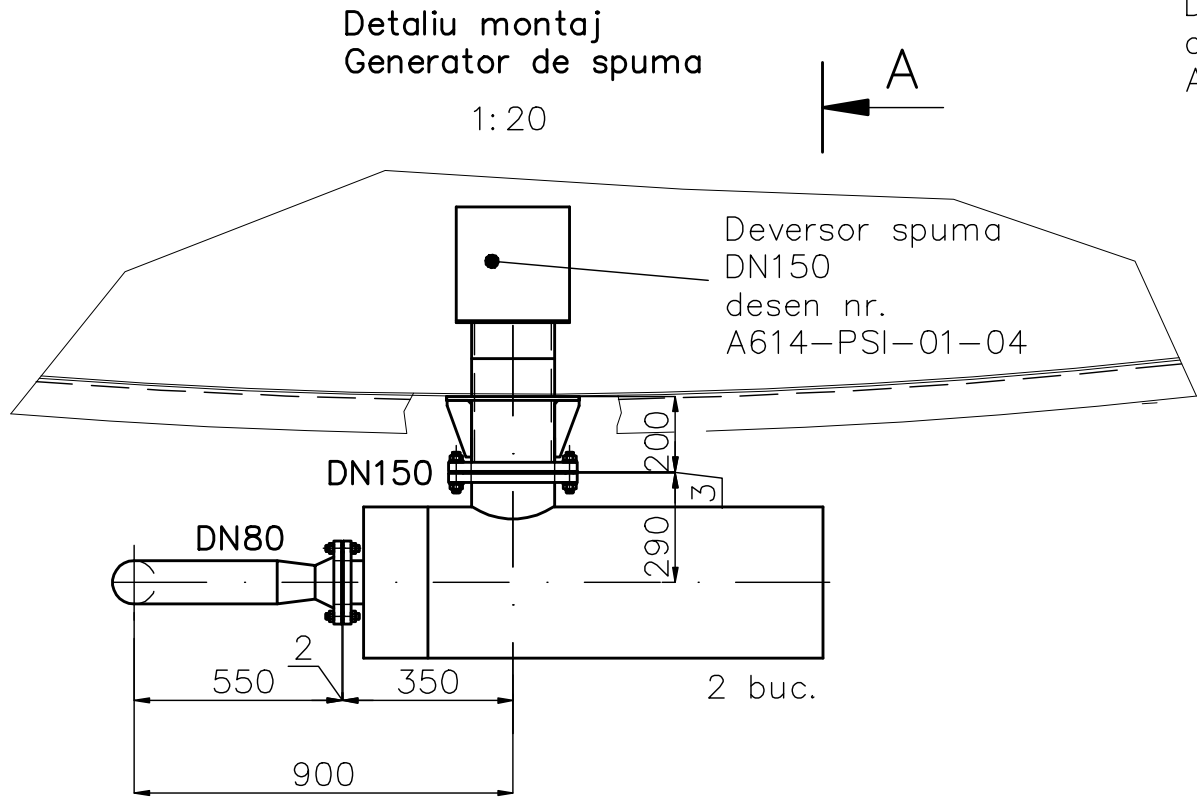
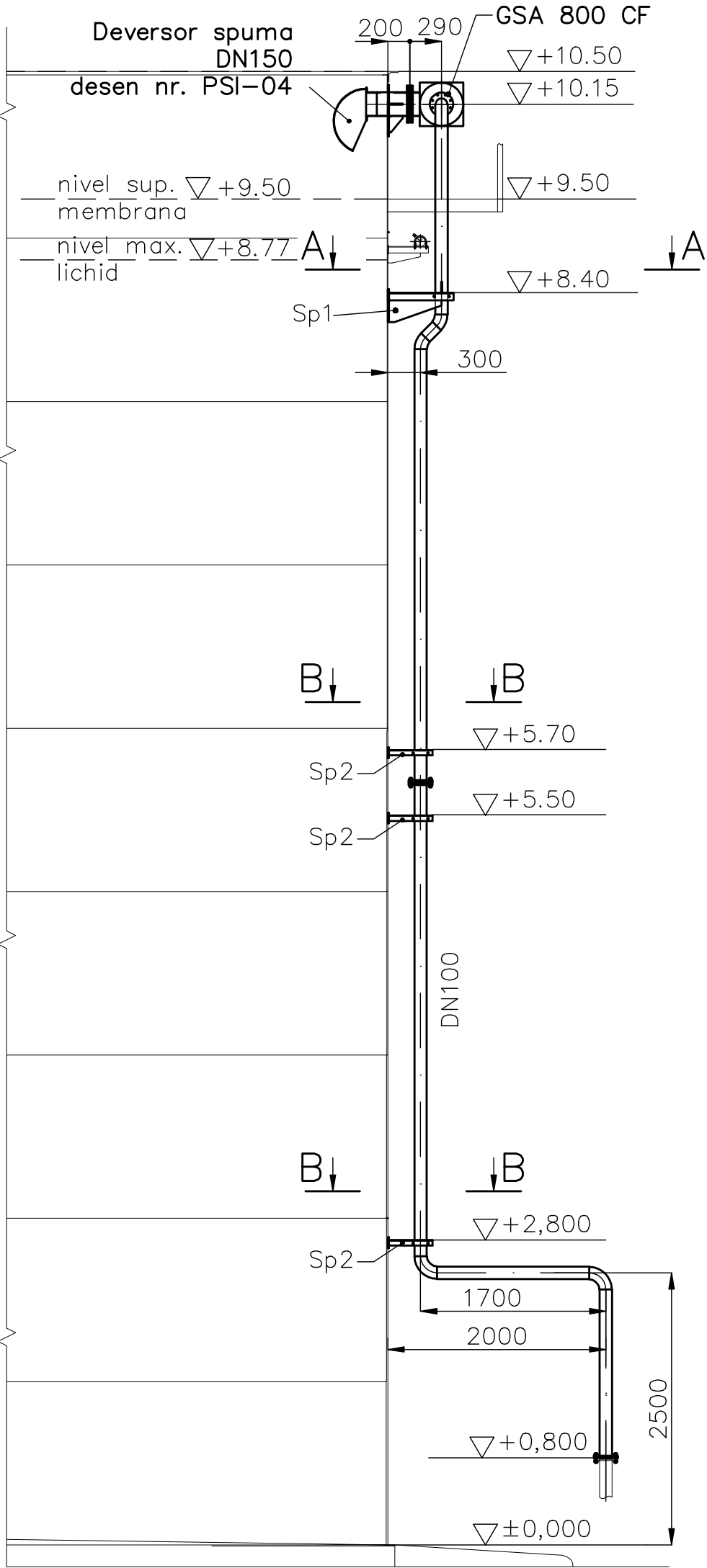
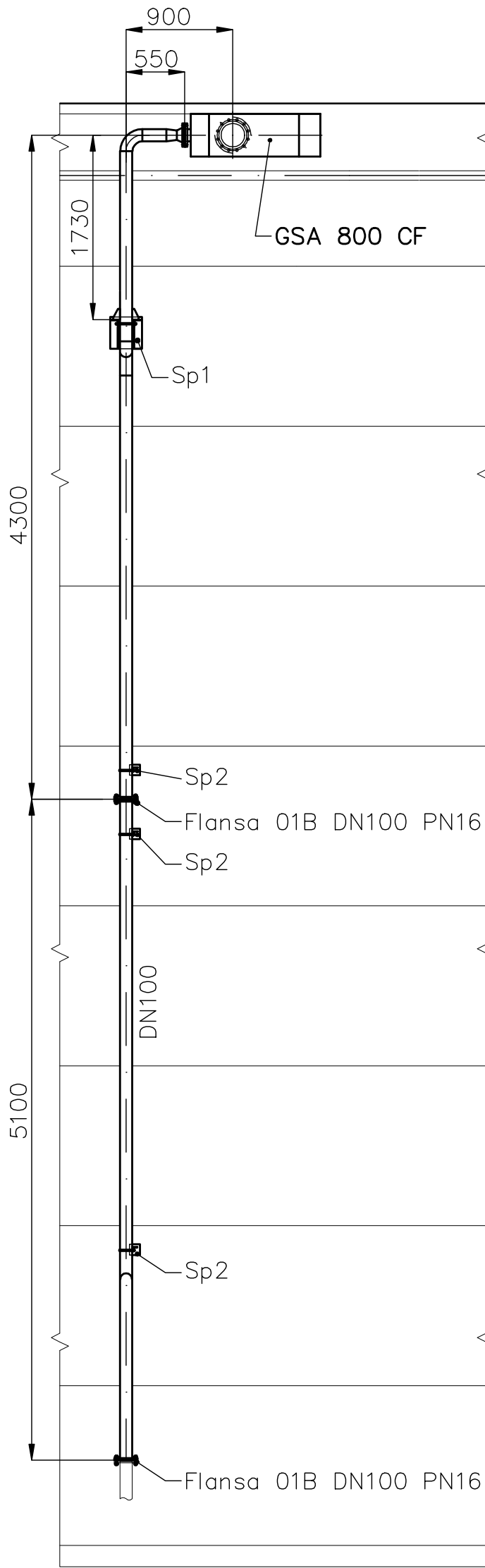
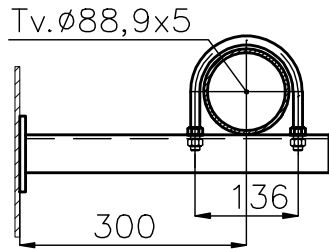


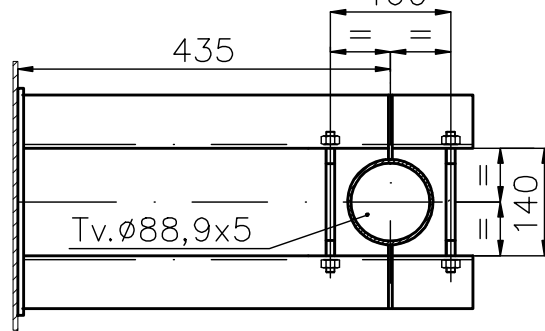
ACEST DOCUMENT ESTE PROPRIETATEA SOCIETATII ELLIS'92 S.R.L. - PLOIESTI. IN CONSECINTA, FIRMA ARE DREPTUL EXCLUSIV DE FOLOSIRE A DESENULUI SAU DE OPERARE A EVENTUALELOR MODIFICARI DIN CAMPIUL ACESTUIA.



B-B  
Detaliu suport Sp2  
1:10



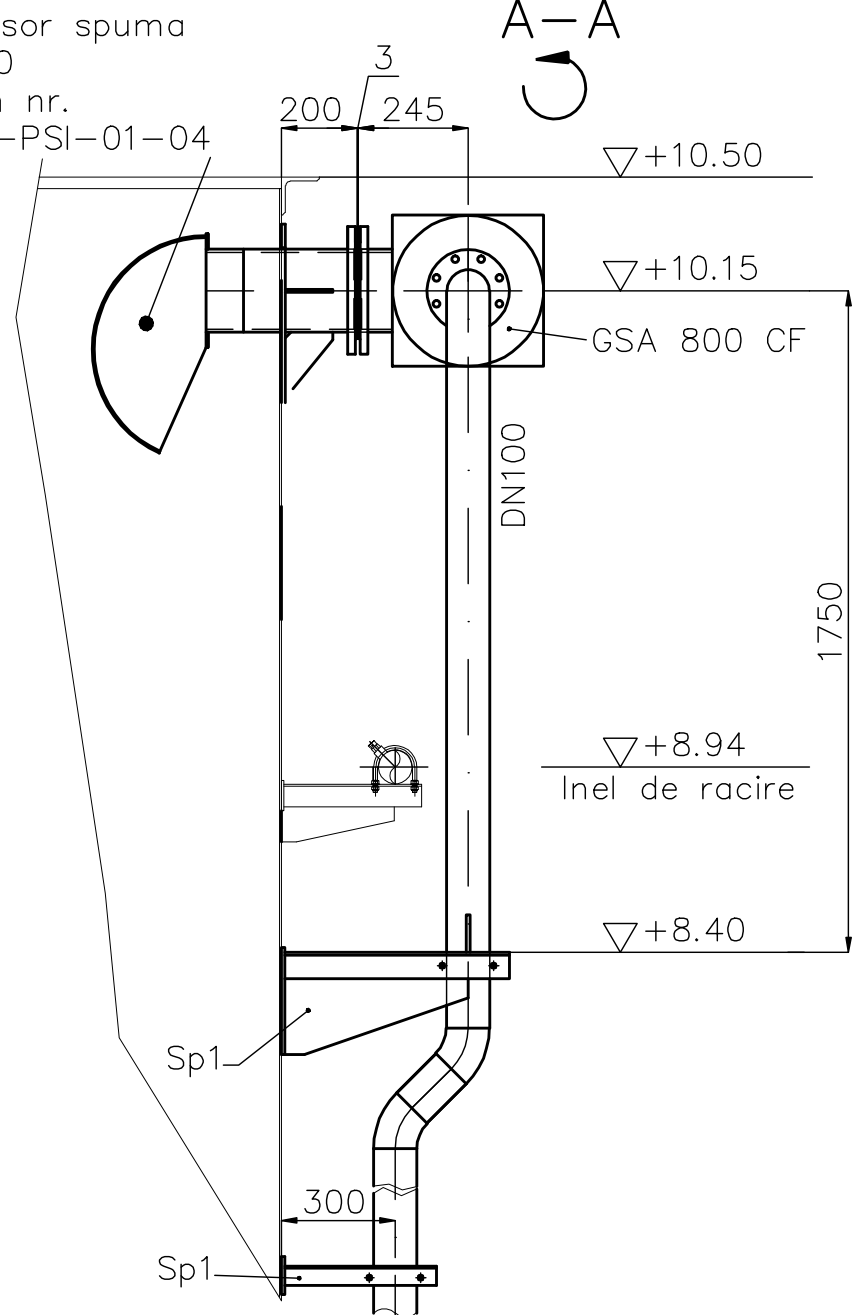
A-A  
Detaliu suport Sp1  
1:10



Detaliu montaj  
Generator de spuma  
1:20



Deversor spuma  
DN150  
desen nr.  
A614-PSI-01-04



Rev.	Descriere			Data		Semnat		Rev.	Descriere			Data		Semnat			
Acest document este proprietatea S.C. ELLIS'92 S.R.L. si nu va fi comunicat fara autorizare																	
Intocmit		Verificat		Aprobat		Beneficiar						Denumire proiect					
R. Nita		A.Ionescu		A.Ionescu		S.C. CONPET S.A.						DEZAFECTARE REZERVOR R9 TITEL (V=2889 mc) CONSTRUCTIE REZERVOR NOU PENTRU TITEL (V=2500 mc) STATIA DE POMPARE CARTOJANI					
<div>92 ELLIS</div> <div>arhitectura proiectare inginerie consultanta tehnica</div>				<div>SR AC</div> <div>ISO 9001</div> <div>CECOT</div>		INSTALATIE PSI DE STINGERE CU SPUMA AEROMECHANICA — SECTIUNI —						Nr.		A614-PSI-01.01		Rev.0	
												Scarad:50(1:20;1:10)		DDE			
												Index: A614-PSI-BD		Rev.0			
												Data:04.2017		Plansa:1/1			
												Material:		Masa:			